

April 2026

PRODUCT CATALOGUE

+352 691 135 042

displaced.events

Event-Rental, Lights, Sound, Effect & Eventsupport



TABLE OF CONTENTS

About us

1. Sound

2. Light

3. Effects & Smoke

4. Video

5. Electricity

6. Pavillions & Tents

7. Tables, Tarps, Seats & Lounge

8. Bar

9. Heaters

10. Stage

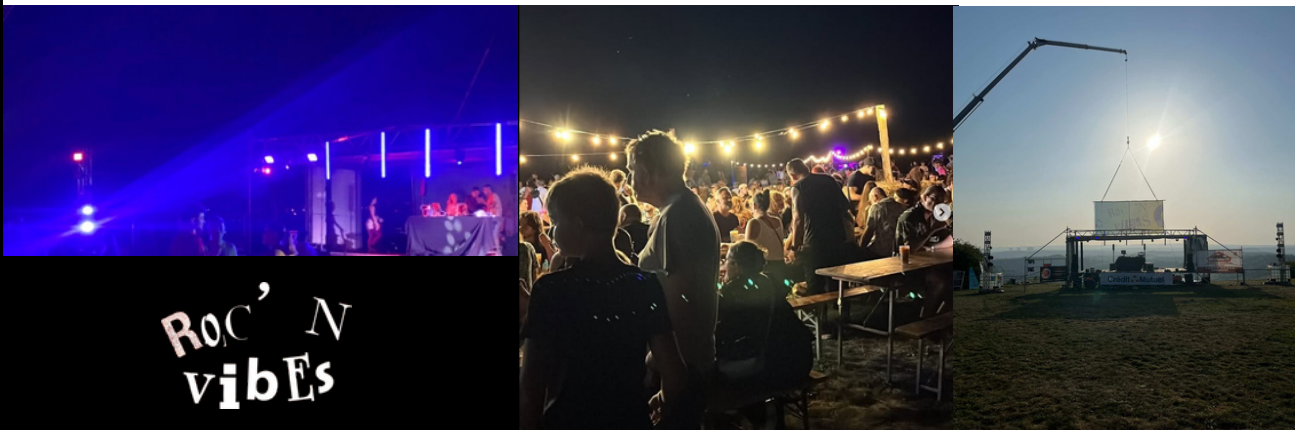
Contact



LAST YEAR'S FESTIVAL SEASON



From 2023 on we provided lights and effects every year for the Crowfield Festival. It's an very speical 2 day indie - rock - jazz - hiphop festival in Remerschen next to the Watertower with camping and an unbelievably welcoming community



From their first edition in 2024 on we provided lights, logistical equippment and more for the Roc 'n Vibes Festival in France, It's a diverse Festival featuring local artisans and musicians directly on the luxembourgish, french and german border.



The first edition of the Borderless festival in 2025 we provided the trussing and lights for the 2 stages on their festival, it was an electronic "house music" festival

1. SOUND RENTAL

+352 691 135 042

Event-Rental, Lights, Sound, Effect & Eventsupport

1.1 Soundsystems

1.2 Mixingtables & DJSetup

1.3 Microphones

1.1.0 REQUEST

The most important thing to have is a soundsystem adapted to your needs, We are able to customise you a setup fitted to your needs for up to 2500 event guests, this will be tailored to your needs and it's the best option.

1.1.1 MIXED POWER BUNDLE

This package is for 300-1000 Event-Guests

2x OPERA 12 - dBTechnologies
2x OPERA 15 - dBTechnologies
2x the box pro TP218/1600 MkIII
2x TA12 - the box
2x TA18 - the box



1.1.2 THE BOX POWER BUNDLE

This package is for 50-300 Event-Guests

2x TA12 - the box
2x TA18 - the box



1.1.3 THE MAC MAH BUNDLE

This package is for 50-300 Event-Guests

2x 15" / Mac Mah - AS Pro 15
2x 18" / 818 Sub



1.1.4 RCF EVOX 8 BUNDLE

This package is for 50-120 Event-Guests

2x 12" SUB
2x 8x 2" Tops



1.1.5 SMALL EVENT SOUND PACKAGE

This package is for 10-70 Event-Guests

2x 12" Tops
1x 15" Sub



1.1.6 THE BOX PRO TP218/1600 MKIII

Double 18" Subwoofer

1600 W AES (3200 W peak)
100 dB SPL, 136 dB max.



1.1.7 THE BOX TA18

Single 18" Subwoofer

500 W RMS (1 500 W peak)
131 dB SPL



1.1.8 MAC MAH - AS 818 SUB

Single 18" Subwoofer

800 W RMS (1 600 W peak)
129 dB SPL



1.1.9 DBTECHNOLOGIES 15"

Single 15" Subwoofer



1.1.10 RCF 12"

Single 12" Subwoofer

500 W RMS (1 000 W peak)
120 dB SPL



1.1.11 MAC MAH - AS PRO 15

15" Top

RMS: ~800 W

- LF: 650 W HF: 150 W

Peak ~1600 W

- LF: 1300 W HF: 300 W

127 dB SPL

45 Hz – 20 kHz



1.1.12 DB TECHNOLOGIES OPERA 15

15" Top

RMS: 600 W

Peak 1200 W

130 dB SPL

56 Hz – 19 kHz



1.1.13 DB TECHNOLOGIES OPERA 12

12" Top

RMS: 600 W

Peak 1200 W

129 dB SPL

67 Hz – 19.6 kHz



1.1.14 THE BOX TA12

12" Top

RMS: 400 W

Peak 800 W

120 dB SPL

75 Hz – 16 kHz



1.1.15 DB TECHNOLOGIES B-HYPE 12

12" Top

200 W RMS

400 W Peak

126 dB SPL

55 Hz – 20 kHz



1.2.1 DJ BUNDLE 1000

2x XDJ 1000MK2
1x DJM 750mk2



1.2.2 DJ BUNDLE 2000

2x CDJ 2000 Nexus 2
1x DJM 750mk2



1.2.3 DJ BUNDLE A9

2x CDJ 2000 Nexus 2
1x DJM A9



1.2.5 XDJ 1000MK2

File Formats

- AAC, AIFF, MP3, WAV, ALAC, FLAC
- iOS version of rekordbox: MP3 and AAC only

File Systems

- FAT, FAT32, HFS+

MIDI Control

ProDJ Link

KUVO ready

Auto Standby

rekordbox



1.2.6 CDJ 2000 NEXUS 2

File Formats

- ALAC, AAC, AIFF, FLAC, MP3, WAV

File Systems

- FAT, FAT32, HFS+

MIDI Control

ProDJ Link

KUVO ready

Auto Standby

rekordbox



1.2.7 CDJ 2000 NEXUS

File Formats

- AAC, AIFF, MP3 (MPEG-1 32Kbps - 320 Kbps, MPEG-2 16 Kbps - 160 Kbps), WAV
- iOS version of rekordbox: MP3 and AAC only

File Systems

- FAT, FAT32, HFS+

MIDI Control

ProDJ Link

KUVO ready

Auto Standby

rekordbox



1.2.7 DJM 750 MK2

Sound Colour FX

- Dub Echo, Filter, Noise, Sweep

Beat FX

- Delay, Echo, Flanger, Helix, Ping Pong, Pitch, Spiral, Reverb, Roll, Trans, Vinyl Brake

Inputs

- 4 PHONO (RCA), 4 LINE (RCA), 1 MIC (XLR & 1/4 inch TRS Jack)

Send/Return

- 1 SEND (1/4-inch TS jack), 1 RETURN (1/4-inch TS jack)

Outputs

- 2 MASTER (XLR, RCA), 1 BOOTH (1/4 inch TRS Jack), 2 HEADPHONE MONITOR (1/4 inch Stereo Phone Jack, 3.5mm Stereo mini-jack)

USB

- 1 USB B port + 1 USB A port



1.2.8 DJM A9

- Bluetooth Ver.5.0, Compatible Codecs : SBC, AAC
- WLAN Supported standards : IEEE 802.11 a/b/g/n/ac 2.4 GHz / 5 GHz
- 4 Channels
- MULTI I/O USB TYP A
- SOUND COLOR FX: Dub Echo, Sweep, Noise, Crush, Filter
- BEAT FX: Echo, Ping Pong, Sral, Helix, Reverb Flanger, Phaser, Filter, Triplet Filter, Trans, Roll, Triplet Roll, Mobius
- FX Frequency Buttons
- Terminal Inputs 4 DIGITAL (Coaxial), 4 LINE (RCA), 4 PHONO (RCA)
- Send/Return Terminal: 1 SEND (1/4-inch TS jack) 1 RETURN (1/4-inch TS jack)
- Outputs MASTER (XLR, RCA), 1 BOOTH (1/4 inch TRS Jack), 2 HEADPHONE MONITOR (1/4 inch Jack, mini-jack), 1 REC OUT (RCA), 1 DIGITAL (Coaxial)
- 1 USB A port, 2 USB B port, 2 USB C ports



1.2.9 RELOOP RMX60

- Classic 4+1 channel performance club mixer
- 11 inputs, 6 outputs
- Fully digital architecture for outstanding sound and flexibility
- 9 high-quality performance effects in studio quality (flanger, delay, echo, reverb, gate, pitch shift, phase, bit crusher, noise)
- Large, clearly arranged parameter display
- Bipolar filter per channel
- Adjustable EQ characteristics (kill & classic)
- InnoFader compatible (RMX InnoFader available separately)
- Crossfader assign switch per channel
- Mic channel with 2-band EQ & talkover "Active Ducking Technology" for mic channel
- 2 headphones outputs (jack and mini jack)
- Intelligent 1-knob equalizer and mono/stereo switch for headphones
- Future-proof due to innovative, updateable firmware system (USB service port)
- Fader & crossfader-start and curve adjust
- Symmetrical (XLR) as well as asymmetrical (RCA) outputs
- incl. power cord and instruction manual



1.2.10 THEMIX 184X P(OWER) M(IXER)

10 Channel

Frequ. 10Hz-60kHz

Gain +10dB to +60dB

Equalizer

6 mono input channels with gold plated XLRs, balanced line inputs and inserts.

ultra-low noise discrete mic preamps with +48V phantom power.

4 stereo input channels with balanced jacks.

2 additional multi-functional stereo channels with 60mm faders. switchable 7-band graphic equalizer for ultimate main mix equalization.

ALT 3-4 bus routable to main mix and control room with insert, PFL and 60mm masterfader.



1.2.11 BEHRINGER XENYX 802S

USB-B port

2 microphone inputs with 3 band EQ: XLR

2 mono line inputs: 6.3 mm jack

3 stereo line inputs with 3-band EQ: 6.3 mm jack

48 volt phantom power

1 FX Send: 6.3 mm jack

Monitor output: unbalanced 6.3 mm jack

Master output: balanced 6.3 mm jack

Streaming/2Track In/Out: RCA

Phones output: 6.3 mm stereo jack



1.2.12 BEHRINGER FLOW 8

with Bluetooth audio and USB audio interface

2 mono channels with microphone inputs: XLR (+48 V phantom power switchable)

2 mono channels for microphone and line signals: XLR/TRS combo jack

2 stereo channels for line and instrument signals: 6.3 mm jack

per channel: 4-band EQ and compressor

Stereo main output with 9-band EQ and limiter: XLR

2 monitor outputs: 6.3 mm jack

Stereo headphone output: 6.3 mm jack

Footswitch input: 6.3mm jack

USB-B port for audio transmission

Micro USB port for power supply

60mm faders

2 effects processors with 16 effects

fully controllable via Behringer FLOW Control app (available for Android and iOS)

Bluetooth audio for direct streaming from smartphones or tablets

24 bit / 48 kHz USB audio interface with 10 inputs and 2 outputs



1.3.1 SHURE BLX24R/SM58 WIRELESS SYSTEM



1.3.2 SHURE SM 58



1.3.3 SENNHEISER E845S



1.3.4 SHURE SM57



1.3.5 SENNHEISER MD421-II



1.3.6 KM184



1.3.7 SHURE BETA 98 AD/C



1.3.8 SHURE SM81



1.3.9 SHURE DH5T/O-MTQG DURAPLEX HEADEST



1.3.10 JBL MICROPHONE-PARTYBOX WIRELESS



2. LIGHTS

+352 691 135 042

Event-Rental, Lights, Sound, Effect & Eventsupport

2.1. Moving Heads & Washes

2.2. Blinder, Washes, Strobes & Pars

2.3 LED Bars and Pixel Bars

2.4 LED Tubes

2.5 Laser and Beam Effects

2.6 UV- / Blacklights

2.7 Pre-Build Bars

2.8 Fairy Lights

2.9 Floodlights

2.1.1 VARYTEC HERO WASH 340FX

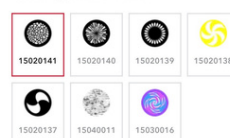
Light source: 3x 40W RGBW 4in1 LED
 Beam angle: Motorised zoom 4° - 45°
 Lux @ 2m (4'): 48000
 Electronic dimmer: 0 - 100%
 Electronic shutter: 0 - 20 Hz
 Continuous FX rotation
 16-Bit pan / tilt: 540° / 210° degrees
 Control: DMX (8/16 channels), master / slave, automatic built-in programs, music control



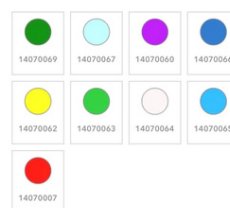
2.1.2 ROBE COLORSPOT 250 AT

Standard objective: 15°
 Gobo wheel: 7 rotating, indexable, replaceable "SLOT&LOCK" glass gobos + open
 Interchangeable high-speed rotating 3-facet prism, optional frost filter supplied with the fixture
 Dimmer/Shutter: Full range dimming and variable strobe effect
 Focus: Motorized focus
 Pan: 530° Tilt: 280°
 Protocol: USITT DMX-512, RDM support
 Control channels: 14, 16, 18 or 20
 DMX channels: 4 protocol modes
 Built-in demo sequences
 Pan/Tilt resolution: 16bit
 Colour wheel, Gobo indexin, Focus, Dimmer: 8 or 16bit
 Master/Slave operation
 Stand-alone operation
 3-editable programs, each up to 99 steps
 Movement control: Tracking and vector
 Built-in analyzer for easy fault finding
 Data in/out: Locking 3-pin XLR + 5-pin XLR

Rotating Gobo Wheel



Colour Wheel



2.1.3 LIGHTMAXX VEGA SPOT 60

Equipped with 60 watt LED
 13° beam angle, motorized focus
 Color wheel with 7 dichroic color filters
 Gobo wheel with 5 gobos
 3-facet prism for exciting light refractions
 Electronic shutter for stroboscope effects
 PAN/TILT: 540° / 210°
 Can be controlled via DMX, standalone, master/slave or music control
 5 or 15 DMX channels
 8 internal programs



2.1.4 BEAM PRO ZQ02341

8 patterns
 8 colors,
 6+12 prism effect
 540° X-axis and 180° Y-axis rotation
 Sound, Auto, Master-Slave, and DMX (12CH)



2.2.1 CAMEO THUNDER WASH 600 RGBW

strobe, blinder and wash light in one device

- Beam angle: 100°
- Number of DMX channels: 1/2/3/4/7
- 648 RGBW SMD LEDs of 0.2 W each
- High light output of 6.700 lm
- 1 To 30 strobe flashes / sec adjustable
- DMX, sound and manual control
- Standalone and master/slave operation



2.2.2 WATERPROOF LEDPARS 200W RGBW IP65

Waterresistant, IP65
RGBW LED Lights
DMX CONTROL



2.2.3 LED RGBW&WW BLINDER 260W COB PAR LIGHT

red, green, blue, cold & warm white
DMX Control
For indoor use



2.2.4 "SPYDER" 250W WALLWASHER

Stroboscopic frequency: 1-16Hz
Y-axis: 120°
Operation mode: self-propelled, voice-activated, DMX512,
master-slave
Control channel: 7/13/43CH
Features: Y shaking head+ lean + flash



2.3.1 BRITEQ LED BAR COLOR BANK

RGB LED Lights

- DMX CONTROL
- 6,9,15&27 Ch. mode Dividable in 1,2,4,8 zones



2.3.2 STAIRVILLE SHOW BAR PRO 16X10W RGBAW IP65

IP65

Pixelbar, DMX ...



2.3.3 LEDS 24 X 3 W RGB BAR LIGHT EFFECT

IP22

DMX



2.3.4 VARYTEC BLITZ BAR 240

384 RGB LEDs as wash effect and 240 strobe LEDs, arranged tubularly in the centre

Segment control with 20 segments for the strobe tube and 32 segments for the RGB LEDs provide numerous options



2.4.1 EUROLITE AKKU IP PIX TUBE 360° PRO CRMX IP65

360° beam angle and integrated wireless receiver for CRMX (DMX) operation
 Suitable for outdoor use IP65
 24 individually controllable segments
 Operating time up to 8.5 hours depending on the program used
 Controllable via stand-alone IR remote control
 CRMX by LumenRadio
 DMX failure modes: Hold, Blackout, Static, Full on
 Single-color OLED display
 Charging status indicator



2.4.2 MOOD1 PRO 120 CM LED (NO DMX)

7 hours of continuous light with AKKU
 IP22

2.4G remote control, group control: the pack of 6 RGB LED tube light contains six remote controls, each powered by two AAA batteries.



2.4.3 ADJ LED COLOR TUBE II (NO DMX)

15 LED colors + white
 Rainbow effect
 with user-friendly wireless remote control for manual color change, automatic color change, flash, rainbow effect, slow to fast color strobe effects, on/off, including power cord
 Light source: 32 x 0.2 W



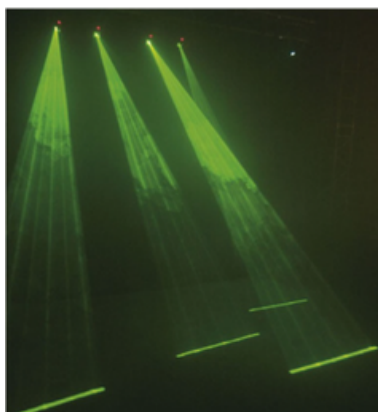
2.5.1 STAIRVILLE DJ LASE RGB PRO ADVANCED 2000

- Laser unit: red: 500 mW 638 nm, green: 500 mW 520 nm, blue: 1000 mW 450 nm
- Laser class: 4
- Scanner speed: 20 K
- Max. beam diameter: $\phi < 5$ mm
- Beam divergence: < 2 mrad, $< 90^\circ$
- Deflection angle: 1° - 36°
- Laser safety according to EN60825-1:2015
- Control: ILDA, DMX-512 (20 channels), infrared remote control (included) or via the specially developed keyboard (included)



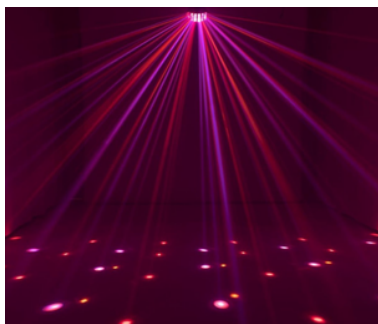
2.5.2 GALACTIC BEAM G40

- 40mW Green Fatbeam Laser
- Power Input: AC 100-240V, 50/60Hz
- Power Consumption: 12 Watt
- Beam Diameter < 18 mm at aperture
- Laser Class: 3B
- Laser Modulation: TTL
- Laser Safety: EN/IEC 60825-1 Ed 2, 2007-03
- Laser Color: Green
- Laser Power: > 40 mW 532nm Green
- Scan Angle: $\pm 80^\circ$
- Control Modes: Auto, Sound, Master/Slave, DMX
- Divergence (each beam) < 2 mrad; Divergence (total light) < 160 degrees
- 3-pin DMX In and 3-pin DMX Out



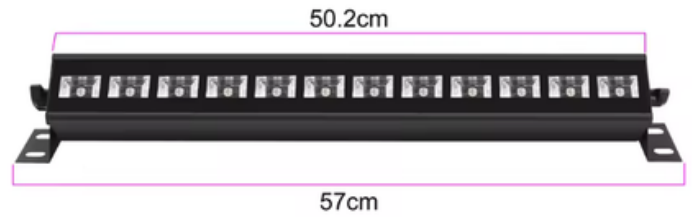
2.5.3 LED D30 HYBRID BEAM EFFECT

- Hybrid effect - LED derby and strobe in one device
- Bright R, G, B, A, W & P LEDs are arranged behind the lenses; white SMD LEDs are left and right on the device front
- Operable in stand-alone mode or via DMX
- 4 or 13 DMX channels
- Sound-control via built-in microphone
- Adjustable microphone sensitivity via control board
- The colourful beams change their direction of movement at every bass-beat in sound controlled mode



2.6.1 UV - LED / DMX / BAR

- DMX Control
- Seperate LED Control



2.6.2 UV FLOODLIGHT

- 100 Watt
- No DMX



2.6.3 UV FLOODLIGHT

- 150 Watt
- No DMX



2.6.4 UV - LED BAR

- Blacklight
- No DMX



2.7.1 EUROLITE LED KLS-180 COMPACT LIGHT SET

Four Quadcolor 4-in-1 LEDs per headlight
 Strobe effect with 4 white 1W LEDs
 Cross beam with integrated DMX control unit and tripod sleeve
 Each spot can be controlled individually via DMX
 DMX-controlled operation or standalone operation with master/slave function possible
 Music control via built-in microphone, microphone sensitivity adjustable
 Includes remote control



LED Type: 16 x 8W RGBW x-in-1 LEDs / 4 x White 1W LEDs
 Beam angle: 9°
 Auto, Sound, Master/Slave and DMX mode
 Number of DMX channels: 3/4/8/21

2.7.2 JB SYSTEMS "PARTY BAR"

2 RGB LED spots,
 2 RGB LED derby light effects,
 4 white strobe LEDs,
 1 star effect laser in red/green
 Laser class 3b
 Convenient remote control via IR remote control (included)
 2 laser diodes (green: 30mW/532nm, red: 100mW/650nm)
 2 rotating derbies each with 3x 3 watt LEDs (red, green and blue)
 2 spots each with three bright 9 watt TCL LEDs (red, green and blue)
 4 white 1 watt strobe LEDs
 Auto, Music, Master/Slave and DMX modes
 37 integrated show programs (all including 4 effects devices) in auto and music mode
 Music control via built-in microphone with sensitivity control
 Each device can be controlled individually via DMX
 3, 5, 6, 9 or 27 channels
 Beam angle: Spots: 15°, Strobe 8°, Laser 93°, Derbies approx. 114°



2.8.1 FAIRY LIGHTS E27 BULBS

warm white available in 5m pieces that fit together for 200 meters (Custom Size available) (IP44)



2.8.2 FAIRY LIGHTS THIN LED

warm white available in 20, 40, 60 and 100m (IP44)



2.8.3 CURTAIN FAIRY LIGHTS THIN LED

Warmwhite available
600 LEDs and socket light curtain:
6 metre wide and 3 metre high light backdrop.
Interconnectable up to 4 curtains (IP44)



2.9.1 WHITE BRIGHT LED FLOODLIGHT

Water resistant, IP65
Warm white 500 W



2.9.2 RGB SPOTS

Water resistant, IP66
RGB LED Lights



2.9.3 BATTERY FLOODLIGHT IP66 200W

Warm white
Cold white
Solar loadable
Usable as Powerbank



2.10.1 WOLFMIX W1

- Standalone (no computer required)
- Compatible with any DMX device
- Up to 4 DMX universes (2048 channels. Add-on required for U3+4)*
- Up to 680 fixtures & beams
- Up to 50 fixture types
- Up to 5000 fixture properties (color/gobo, etc.)
- 8 fixture groups
- 6 projects
- 15000+ available fixtures (3500+ on the controller)
- Can be used as a DMX splitter with DMX universe mapping



2.10.2 DASLIGHT DVC GZM

Works with Daslight 5 software
 DMX interface with 1536 channels
 expandable to 2048 channels (for a fee)
 512 channels in stand-alone mode
 DMX input/output: 4 x 3-pin female XLR
 Ethernet
 USB Type B
 Memory: SD card
 Clock/Calendar
 Metal housing



2.10.3 DIMMER DMX CONTROLLER 12 CHANNELS

12-channel DMX512 signal output dimmer controller with six partial supports and one main support.

Standard connection: standard 3-pin



3. EFFECTS & SMOKE

3.1 Smoke Machines

3.2 Fogger, Hazer and Specials

3.3 Special Effects

3.4 Confetti

3.1.1 STAIRVILLE M-FOG 3000 PRO

- Power of the heating: 3000 W
- Fluid consumption: 230 ml/min
- Heating time: approx. 6 min
- Maximum continuous output: 100% approx. 10 s
- 25% continuous fog possible, post-heating time: approx. 30 s
- Fog output: approx. 630 m³ / min.
- Fluid tank capacity: 6 l
- Control: DMX-512 (1 channel) or detachable multifunctional remote control



3.1.2 LIGHTMAX PRO FOG 1.5

- Control via DMX, wired controller or remote (included)
- Removable, large tank
- Wired controller with status light and 2m cable
- Remote control with 50m range (with clear field of view)
- Warm-up: 7 minutes
- Interval heating: 2 minutes
- Output time: 35 seconds @ 100% (55 seconds @ 50%)
- Output mass: ca. 350m³/min
- Output range: 8m
- Tank capacity: 3L
- Total output: 1400 Watt (heat: 1350W)



3.1.3 FM1500 FOG MACHINE

- 1500W
- 9 x 3 watt 3-in-1 RGB multichip LED
- DMX Controllable
- Remote control
- Warm-up: 6 minutes

Tank capacity: 2L



3.1.4 BLAZE800 VERTICAL FOGGER

- 800W smoke machine with 12x 4W 4-in-1 LEDs
- Red, Green, Blue and Amber colour mixing
- Vertically and horizontally to use
- Creates a high illuminated column of smoke
- Led illuminated reservoir (Blue color)
- Built-in Control panel with LCD display
- LCD remote control with timer function (5mtr)
- Extra wireless remote control

DMX or standalone mode



3.1.5 DRY ICE LOW FOG MACHINE 3500W

- Controllable with external buttons



3.1.6 1000W HAZER ZQ10152

- DMX controllable
- Controllable with external buttons



3.1.5 ANTARI HZ-100

- DMX controllable
- Controllable with external buttons



3.1.6 BUBBLE FOGGER

- remote control, panel control, DMX



3.2.1 COLD SPARK MACHINE

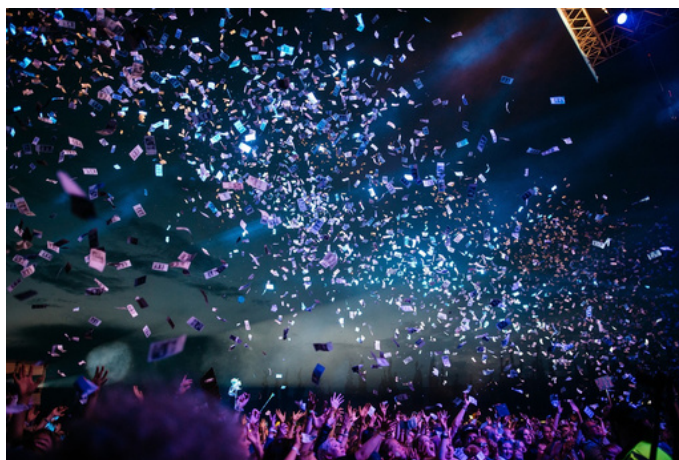
- Working power: 750W
- Input power: 220V/110V \pm 10% 50Hz
- Fuse: 110V/10A 220V/6A
- Preheating time: 3-5 minutes
- Spray height: adjustable 1-5 meters (different heights for different consumables)
- Interface: dual DMX interface, dual power supply
- Body height: 200 205 285mm

Body weight: 5.5kg



3.3.1 CONFETTI LAUNCHER

- Modes : Automatic programs, DMX
- DMX channels: 1, 2
- DMX connection : 3-pin XLR
- Power consumption: 1600W



4. VIDEO

4.1 Projector / Beamer & TVS

27

4.1.1 UST BEAMER

- HD Resolution
- For ceiling and wall
- Ultra short throw



4.1.1 INFLATABLE CINEMA SCREEN



4.3.1 XXL TV 98"

248,9 cm Diagonal
4k 3840 x 2160 Pixel
217,9 / 128,9 / 42,0 cm with stand



4.3.2 TV 43"

- Diagonal: 109 cm
- Width: 95 cm
- Height: 54 cm



5. ELECTRICITY

5.1 Generators	29
<hr/>	
5.2 Cable Bundles	30
<hr/>	
5,3 Distribution Units	31
<hr/>	
5.4 Cable bridges	21

5.1.1 GENERATOR 3000/3500 W (SG3500I)

- 3500 W peak power, 3200 W maximum power for devices with sensitive electronics, power tools, etc.
- Equipped with two 230 V~ AC sockets and two 2.1 A USB ports (quick charging), 1 x 12 V socket
- 141 cm³ displacement, air-cooled 4-stroke petrol engine with pull starter
- Compact case-sized design made of impact-resistant plastic with carrying handle
- Automatic shutdown in the event of a lack of oil
- 6.3 L fuel tank and 400 ml engine oil capacity
- Clean sine wave for sensitive electronics such as laptops, televisions, tablets or smartphones
- Low noise inverter generator: Low noise level of 66 dB(A)*



5.1.2 INVERTER POWER GENERATOR 1800/2300 W

- 2300 watts peak power and 1800 watts operating power. Generators are ideal for camping, festivals, work, boats, RVs and emergencies.
- Low noise: When the generator is in ECO mode at 25% load and is 7 m away from the generator, the noise level is 58 decibels.
- Extra long running time: runs 11 hours at 25% load (450 W load), 6.5 hours at 50% load (900 W load). In Eco mode, the running time can be extended up to 10-12 hours.



5.2.1 CABLE BUNDLE A

- 50m Cable Drum x3
- 25m Cable Drum x3
- 5m Extension cable x5
- 10m Extension cable x3
- 25m Extension cable x2
- 6er Powerstrip x12
- 3er Powerstrip x12



5.2.2 CABLE BUNDLE B

- 25m 16 Ampere 400V Cable x4
- 5m 16 Ampere 400V Cable x4
- Fuse Box 16A with FI Switch
- 50m Cable Drum x3
- 25m Cable Drum x3
- 5m Extension cable x5
- 10m Extension cable x3
- 6er Powerstrip x12
- 3er Powerstrip x12



5.2.3 CABLE BUNDLE C

- 50m 32 Ampere 400V Cable x1
- 25m 32 Ampere 400V Cable x4
- 25m 16 Ampere 400V Cable x4
- 5m 16 Ampere 400V Cable x4
- Fuse Box 16A with FI Switch
- Fuse Box 32A with FI Switch
- 50m Cable Drum x3
- 25m Cable Drum x3
- 5m Extension cable x5
- 10m Extension cable x3
- 6er Powerstrip x12
- 3er Powerstrip x12



5.3.1 DISTRIBUTION UNIT 32A

- Protection class: IP44
- Cable designation: H07RN-F 5G6.0
- Plug: CEE 400V/32A 5-pole/-pin
- Sockets: 1xCEE 400V/32A 5-pole/-pin, 2xCEE 400V/16A 5-pole/-pin (individually fused), 6x protective contact 230V (individually fused)
- Fuse elements (RCD and MCB) safely protected under the hinged cover
- Fuse protection: 2x MCB 400V/16A 3-pole/pin, 6x MCB 230V/16A 1-pole/pin, 1x RCD 40A 4-pole/pin, 30mA



5.3.2 DISTRIBUTION UNIT 32A

- Protection class: IP44
- Max. electrical load capacity: 22000 W
- Rated input voltage: 400 V
- Max. current Current carrying capacity: 32 A
- With FI personal circuit breaker 30mA / 40A / type A
- Number of circuit breakers: 5
- Number of earthed sockets: 3
- Total number of CEE sockets: 5
- CEE socket - 16 A: 1x 16A 3P+N+PE (5p) 400V
- CEE socket - 32 A: 2x 32A 3P+N+PE (5p) 400V
- Plug system plug: CEE 32A 3P+N+PE (5p) 400V
- Cable designation: H07RN-F 5G4,0
- Cable length: 2m

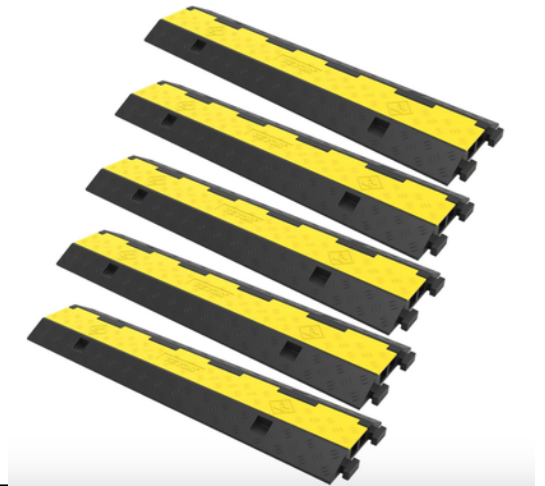


5.3.3 DISTRIBUTION UNIT 16A

- Multiple distributor made of rubber with CEE plug
- (400V/16A 5-pin),
- 7 sockets (230V/16A)
- fuse (3x LS 230V/16A 1-pin/-pin,
- 1x FI 40A 4-pin/-pin 30mA)



5.4.1 CABLE BRIDGE SMALL



5.4.2 CABLE BRIDGE BIG



5.4.3 CABLE BRIDGE NANO



6. PAVILLIONS & TENTS

6.1 Pavillon / Budget

6.2 Pavillon / Professional

6.1.1 3X3 PAVILLON BUDGET



6.1.2 3X4.5 PAVILLON BUDGET



6.1.3 3X6 PAVILLON BUDGET



6.2.1 3X3 PAVILLON PROFESSIONAL



6.2.2 4X4 PAVILLON PROFESSIONAL



6.2.3 3X6 PAVILLON PROFESSIONAL



6.2.4 4X8 PAVILLON PROFESSIONAL



7. TABLES, SEATS, TARPS & LOUNGE

7.1 Tables & Chairs

7.2 Lounge, Tarps & Accessories

7.1.1 FOLDABLE CHAIRS (4-PACK)



7.1.2 FOLDABLE BEACH CHAIRS



7.1.3 FOLDABLE STANDING TABLE



7.1.4 FOLDABLE TABLE



7.2.1 TARPS 3,5 X 1,8



7.2.2 CAMOFLAGE NET



7.2.3 ASHTRAYS GLAS



7.2.4 ASHTRAYS ALUMINIUM



8. BAR

8.1 FRIDGES, HEATING & BEERTAP

8.2 Barequipment

8.1.1 DRINK BOILER/HEATER

- 40 Liters
- 30-110 Degrees Celsius
- For Wine, Chocolate, Water, Gin ...



8.1.2 LOW FRIDGE

- 300 Liters



8.1.5 BEER TAP

- Watercooling
- 1 Tap



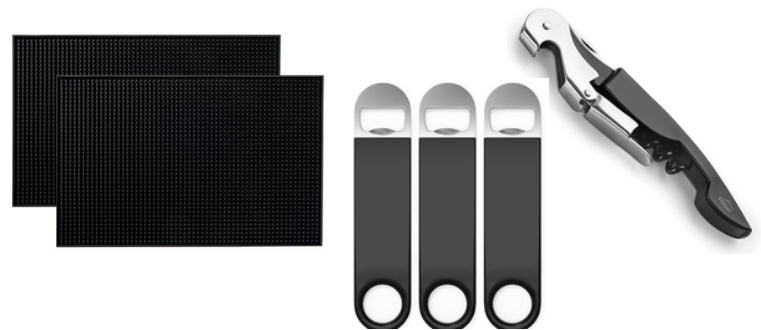
8.2.1 SHAKER & COCKTAIL SET

- Shakers
- Jiggers
- ...



8.2.2 ALLROUND SET

- Bottle openers
- Ballpoint pens
- Work- Plastic mats



8.2.3 SERVICE-TRAY



8.2.4 ICE BUCKETS



9. HEATERS

9.1 Gas Heaters

9.2 Electro Heaters

8.1.1 LOW GAS HEATER (6KW)



8.1.2 HIGH GAS HEATER (8,8KW)



8.1.3 COLUMN GAS HEATER (11KW)



8.1.4 TGH GAS HEATER (30KW)



8.1.1 ELECTRO HEATER (2KW)



8.1.2 ROOF ELECTRO HEATER (1,2KW)



8.1.2 ELECTRO HEATER (3KW)



8.1.2 FAN ELECTRO HEATER (3KW)



9. STAGE & STRUCTURE

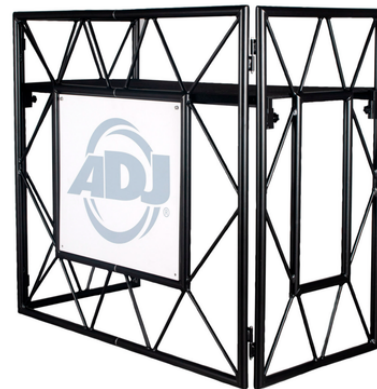
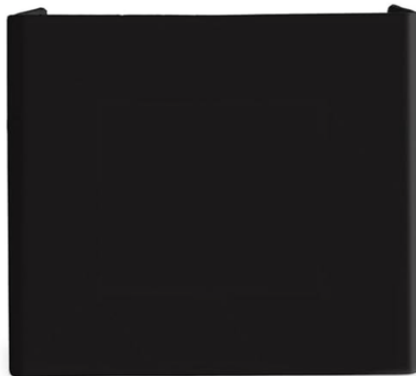
9.1 Diverse Structure

9.2 Stage Riser

9.3 Truss System

9.2.1 ADJ DJ TABLE

- Put your own logo on the white front panel (Dimensions: 635 x 571.5 mm)
- Allowable load: 30 kg
- Tube: 32 mm
- Height of the top: 880 mm
- Dimensions of the top: 1200 x 580 mm
- Dimensions: 1270 x 610 x 1155 mm



9.2.1 IBC TANK 1000 LITERS



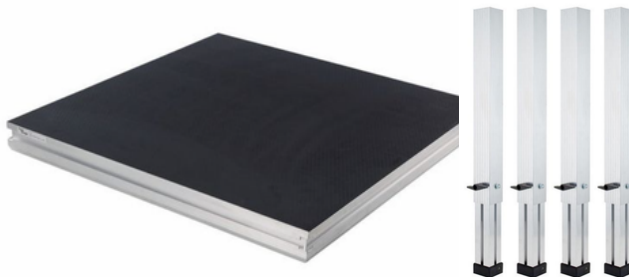
9.2.1 STAGE RISERS

- 200 x 100 cm
- Height: 20, 40, 60, 80 & 100 cm



9.2.2 STAGE RISERS

- 100 x 100 cm
- Height: 40-100 cm



9.2.3 STAGE STAIRS

- Height: 20, 40, 60, 80 & 100 cm



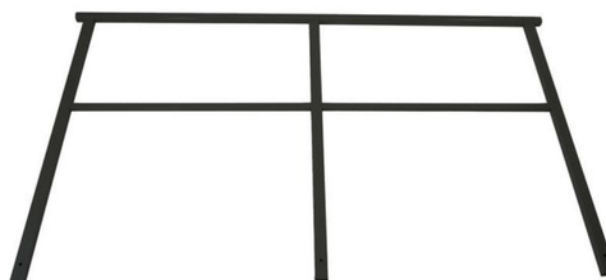
9.2.4 STAGE RISERS

- 50 x 200 cm
- Height: 40-100 cm



9.2.5 STAGE HANDRAILS

- 200 & 100cm
- Handrails for Stairs
- Handrails for Stagerisers



9.3.1 TRUSS & ROOFING

Truss & roofing on request.

CONTACT INFORMATION



+352 691 135 042



rental@displaced.events



<https://displaced.events>



displaced.events

